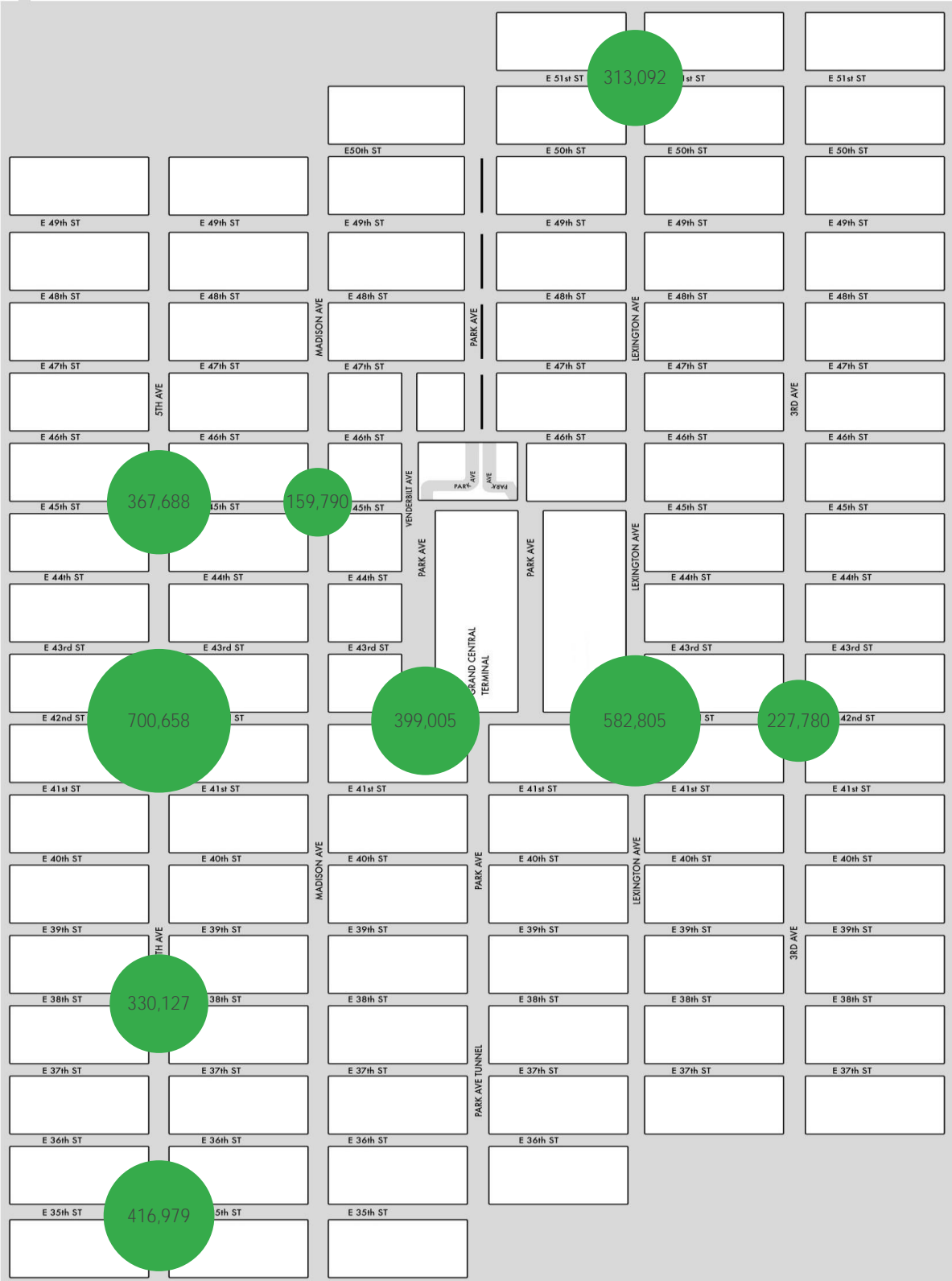
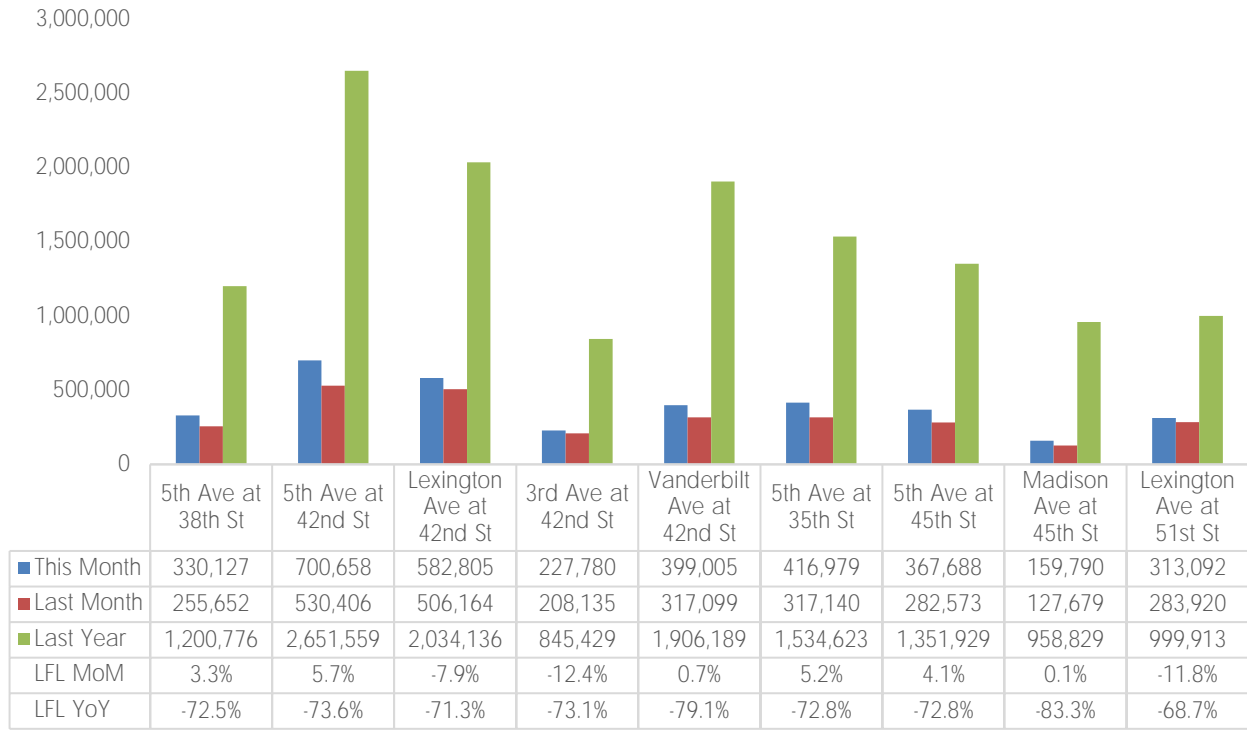


Map

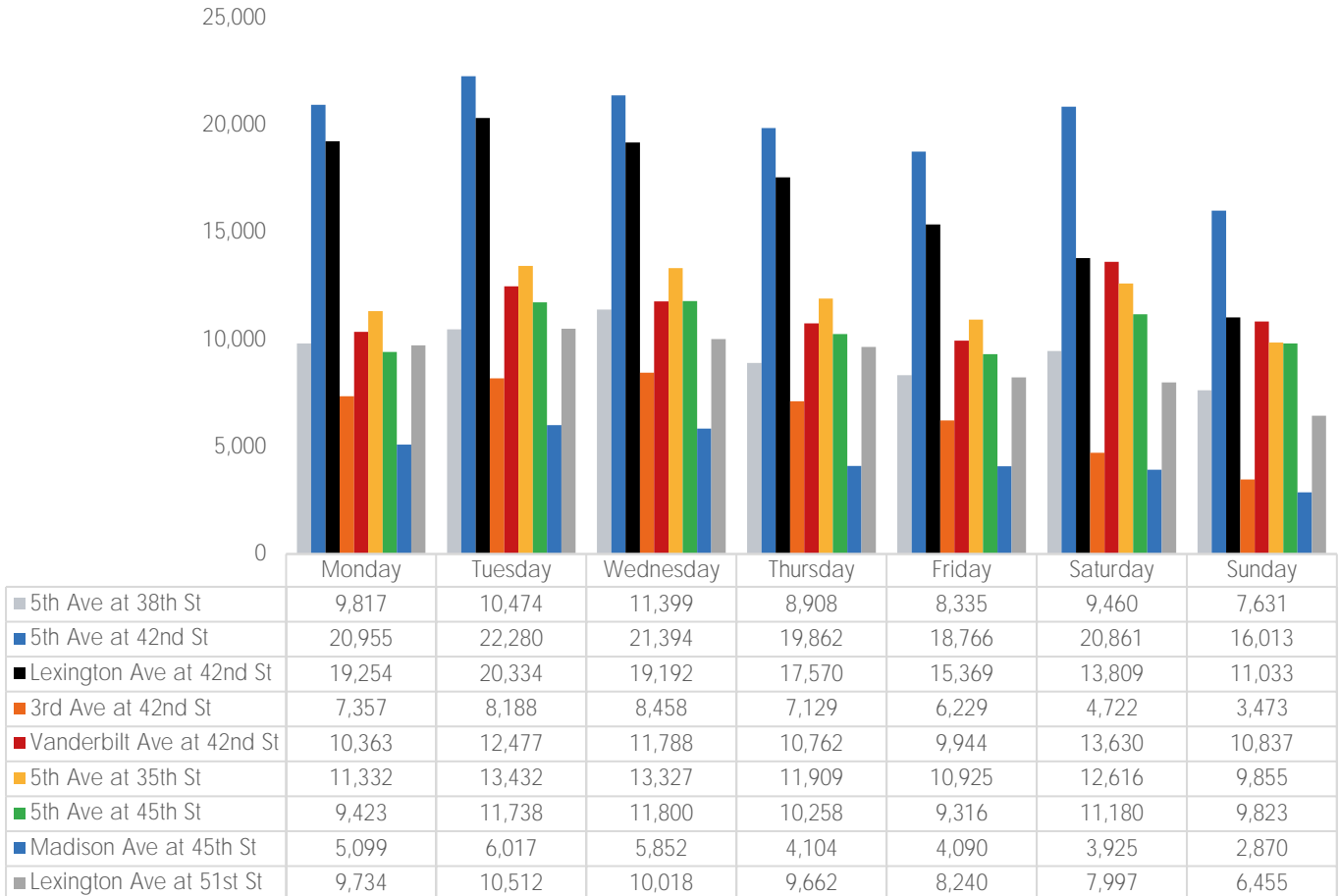


Total Pedestrian Counts



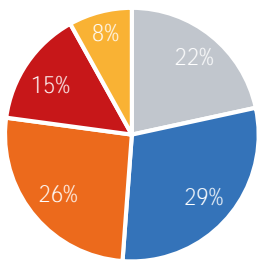
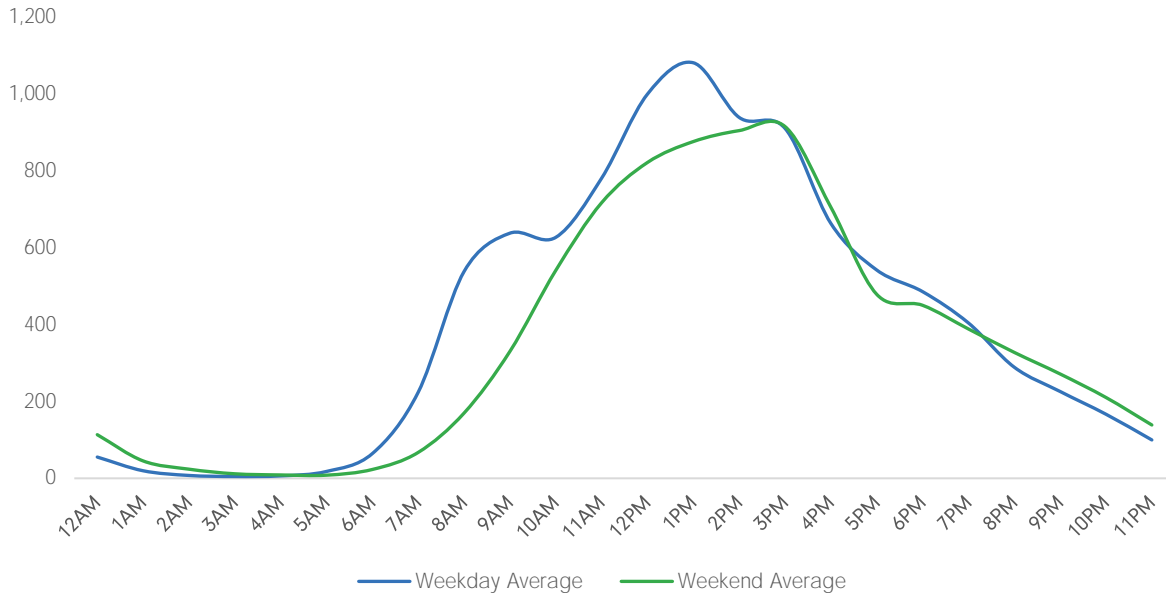
*Throughout this report, month-on-month trends are calculated using daily averages

Average Pedestrian Counts by Weekday

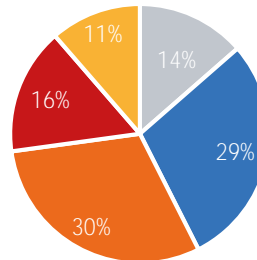


5th Ave at 38th St

	Monday	Tuesday	Wednesday	Thursday	Friday	Saturday	Sunday
December Daily Average	9,817	10,474	11,399	8,908	8,335	9,460	7,631
November Daily Average	10,516	8,557	8,034	9,006	10,125	9,531	6,859
MoM% Change	-6.6%	22.4%	41.9%	-1.1%	-17.7%	-0.7%	11.3%
Last Year Daily Average	34,790	34,879	36,404	37,315	37,195	32,525	27,047
YoY% Change	-71.8%	-70.0%	-68.7%	-76.1%	-77.6%	-70.9%	-71.8%



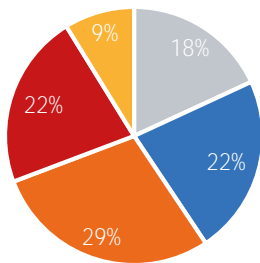
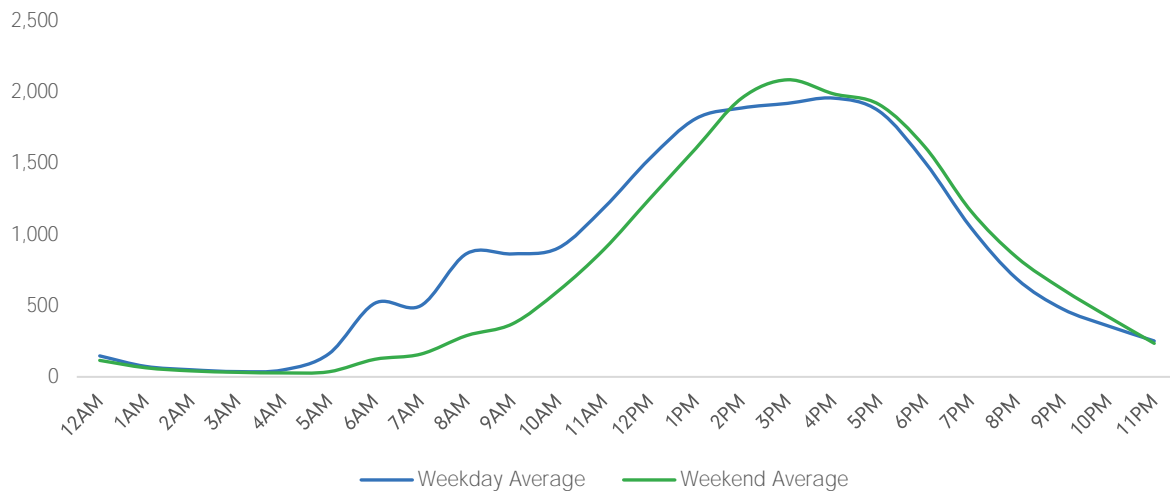
Weekday Average	
Morning	2,091
Lunch	2,861
Afternoon	2,512
Early Evening	1,431
Evening	781



Weekend Average	
Morning	1,131
Lunch	2,414
Afternoon	2,524
Early Evening	1,317
Evening	948

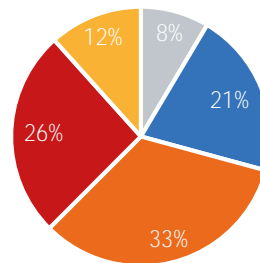
5th Ave at 42nd St

	Monday	Tuesday	Wednesday	Thursday	Friday	Saturday	Sunday
December Daily Average	20,955	22,280	21,394	19,862	18,766	20,861	16,013
November Daily Average	20,330	20,121	8,034	17,031	22,152	19,247	14,156
MoM% Change	3.1%	10.7%	166.3%	16.6%	-15.3%	8.4%	13.1%
Last Year Daily Average	34,790	34,879	36,404	37,315	37,195	32,525	27,047
YoY% Change	-39.8%	-36.1%	-41.2%	-46.8%	-49.5%	-35.9%	-40.8%



Weekday Average

Morning	3,647
Lunch	4,532
Afternoon	5,762
Early Evening	4,418
Evening	1,774

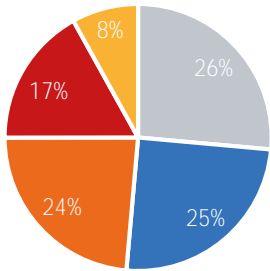
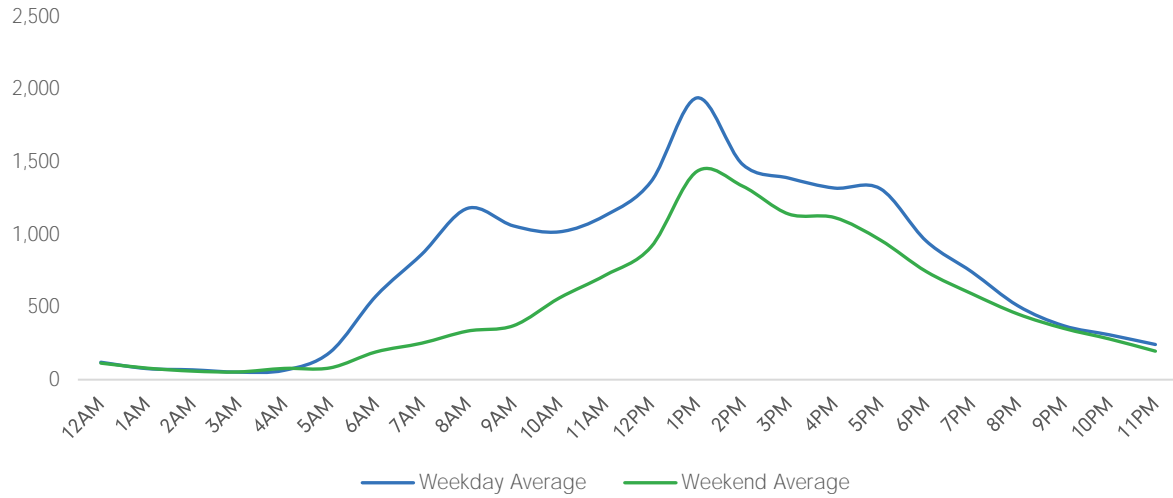


Weekend Average

Morning	1,547
Lunch	3,749
Afternoon	6,027
Early Evening	4,688
Evening	2,110

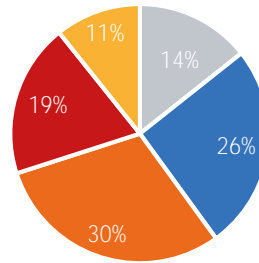
Lexington Ave at 42nd St

	Monday	Tuesday	Wednesday	Thursday	Friday	Saturday	Sunday
December Daily Average	19,254	20,334	19,192	17,570	15,369	13,809	11,033
November Daily Average	20,922	19,761	8,034	18,559	20,462	16,172	11,205
MoM% Change	-8.0%	2.9%	138.9%	-5.3%	-24.9%	-14.6%	-1.5%
Last Year Daily Average	34,790	34,879	36,404	37,315	37,195	32,525	27,047
YoY% Change	-44.7%	-41.7%	-47.3%	-52.9%	-58.7%	-57.5%	-59.2%



Weekday Average

Morning	4,699
Lunch	4,437
Afternoon	4,192
Early Evening	3,014
Evening	1,432

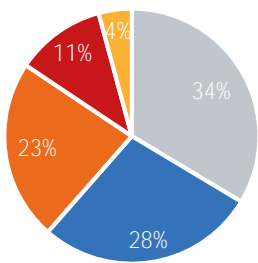
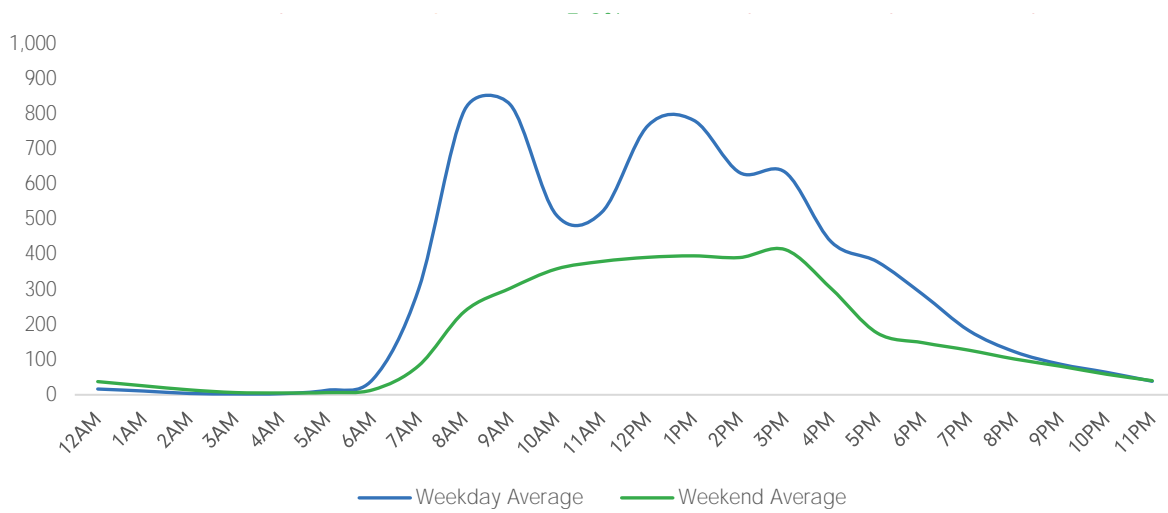


Weekend Average

Morning	1,713
Lunch	3,069
Afternoon	3,592
Early Evening	2,299
Evening	1,283

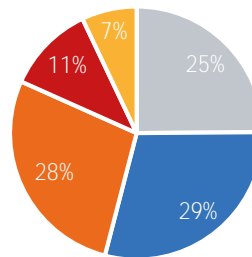
3rd Ave at 42nd St

	Monday	Tuesday	Wednesday	Thursday	Friday	Saturday	Sunday
December Daily Average	7,357	8,188	8,458	7,129	6,229	4,722	3,473
November Daily Average	8,962	8,209	8,034	8,298	9,413	5,027	3,805
MoM% Change	-17.9%	-0.3%	5.3%	-14.1%	-33.8%	-6.1%	-8.7%
Last Year Daily Average	34,790	34,879	36,404	37,315	37,195	32,525	27,047
YoY% Change	-78.9%	-76.5%	-76.8%	-80.9%	-83.3%	-85.5%	-87.2%



Weekday Average

Morning	2,494
Lunch	2,068
Afternoon	1,701
Early Evening	847
Evening	312

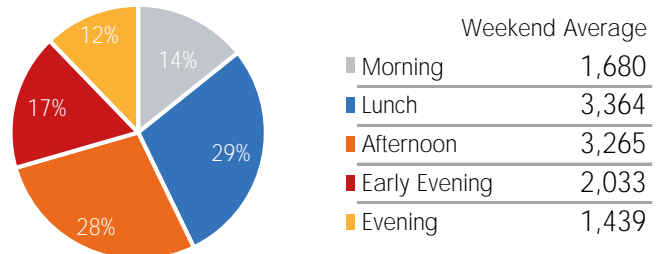
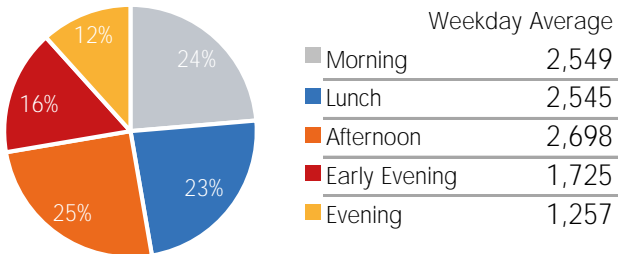


Weekend Average

Morning	996
Lunch	1,167
Afternoon	1,106
Early Evening	451
Evening	282

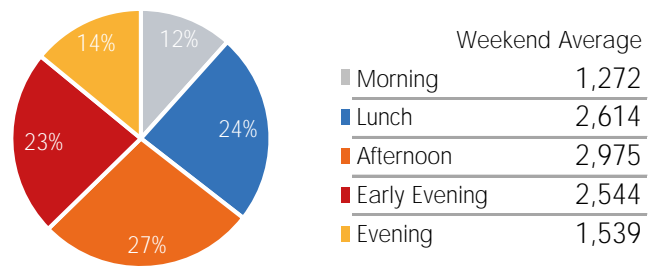
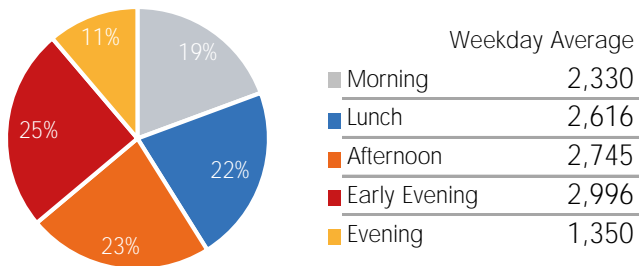
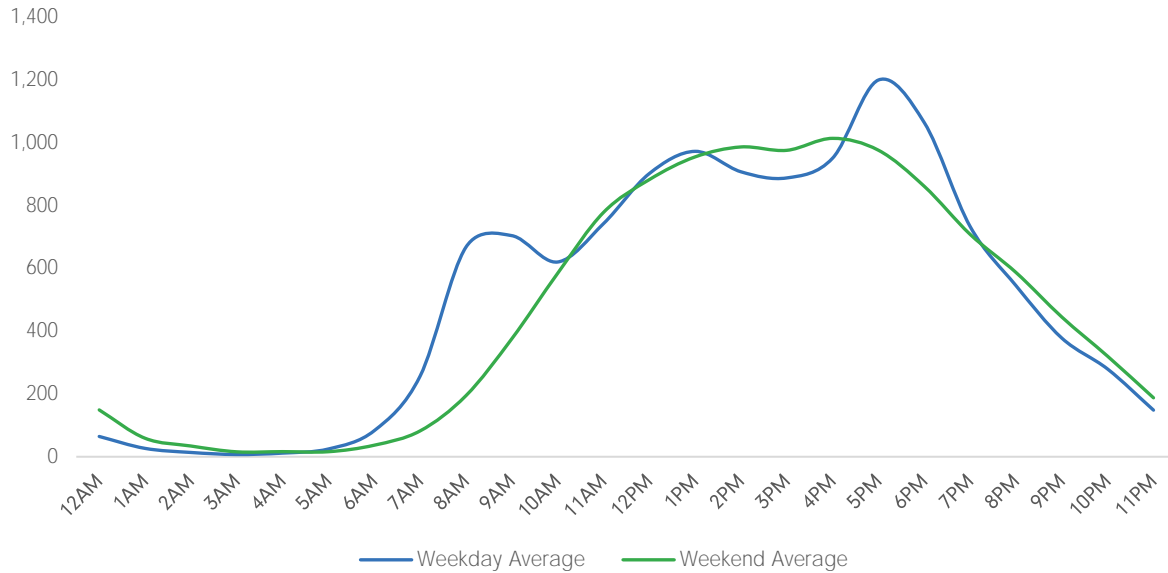
Vanderbilt Ave at 42nd St

	Monday	Tuesday	Wednesday	Thursday	Friday	Saturday	Sunday
December Daily Average	10,363	12,477	11,788	10,762	9,944	13,630	10,837
November Daily Average	10,635	9,912	8,034	10,029	12,108	15,178	11,043
MoM% Change	-2.6%	25.9%	46.7%	7.3%	-17.9%	-10.2%	-1.9%
Last Year Daily Average	34,790	34,879	36,404	37,315	37,195	32,525	27,047
YoY% Change	-70.2%	-64.2%	-67.6%	-71.2%	-73.3%	-58.1%	-59.9%



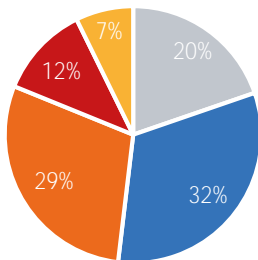
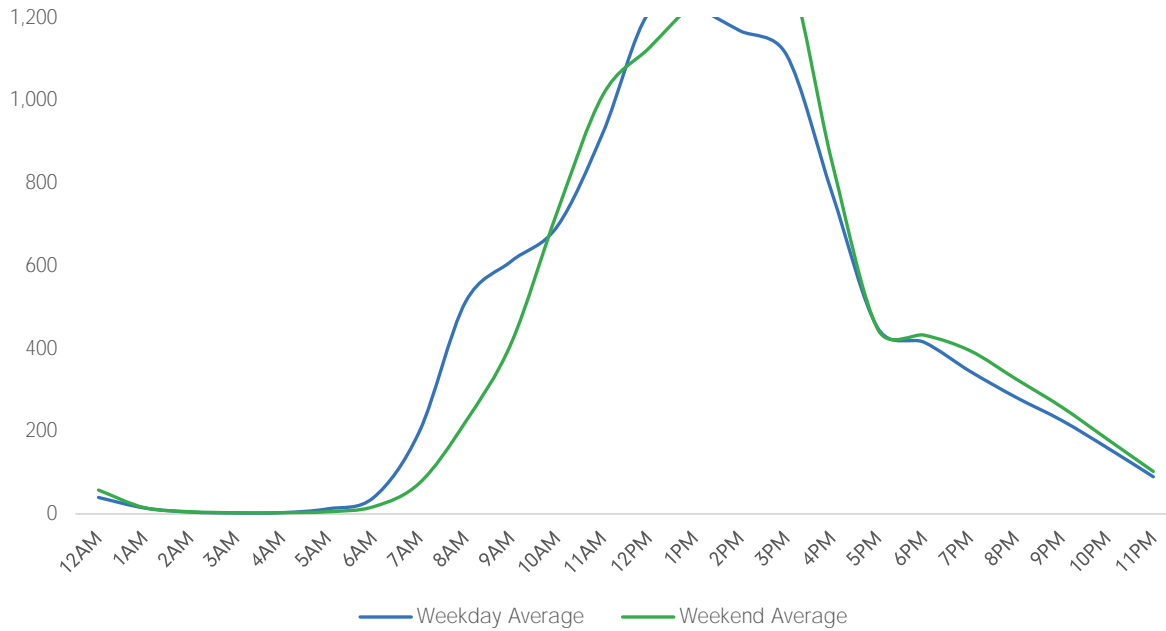
5th Ave at 35th St

	Monday	Tuesday	Wednesday	Thursday	Friday	Saturday	Sunday
December Daily Average	11,332	13,432	13,327	11,909	10,925	12,616	9,855
November Daily Average	12,036	10,730	8,034	12,770	11,753	11,662	9,086
MoM% Change	-5.9%	25.2%	65.9%	-6.7%	-7.0%	8.2%	8.5%
Last Year Daily Average	34,790	34,879	36,404	37,315	37,195	32,525	27,047
YoY% Change	-67.4%	-61.5%	-63.4%	-68.1%	-70.6%	-61.2%	-63.6%

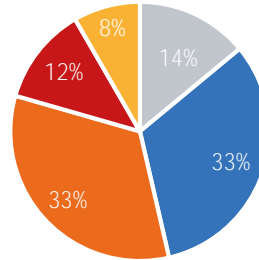


5th Ave at 45th St

	Monday	Tuesday	Wednesday	Thursday	Friday	Saturday	Sunday
December Daily Average	9,423	11,738	11,800	10,258	9,316	11,180	9,823
November Daily Average	10,722	9,640	8,034	9,603	11,520	10,795	7,618
MoM% Change	-12.1%	21.8%	46.9%	6.8%	-19.1%	3.6%	29.0%
Last Year Daily Average	34,790	34,879	36,404	37,315	37,195	32,525	27,047
YoY% Change	-72.9%	-66.3%	-67.6%	-72.5%	-75.0%	-65.6%	-63.7%



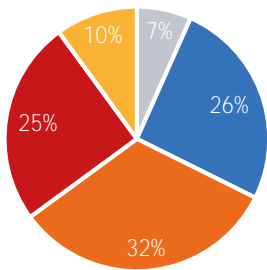
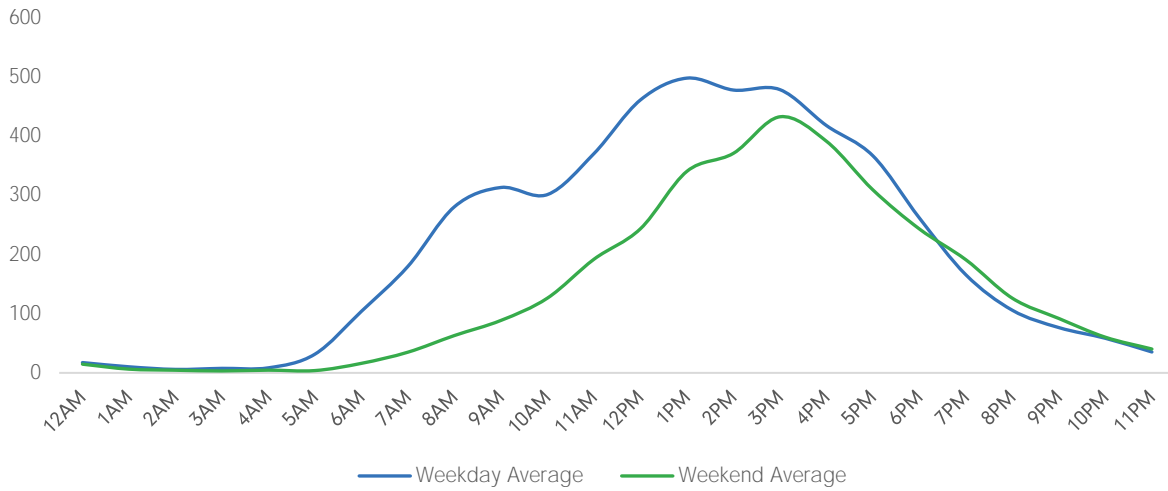
Weekday Average	
Morning	2,058
Lunch	3,355
Afternoon	3,052
Early Evening	1,208
Evening	758



Weekend Average	
Morning	1,457
Lunch	3,373
Afternoon	3,441
Early Evening	1,272
Evening	869

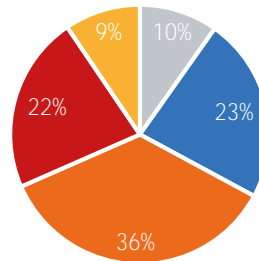
Madison Ave at 45th St

	Monday	Tuesday	Wednesday	Thursday	Friday	Saturday	Sunday
December Daily Average	5,099	6,017	5,852	4,104	4,090	3,925	2,870
November Daily Average	5,762	5,651	8,034	4,934	4,624	3,860	2,357
MoM% Change	-11.5%	6.5%	-27.2%	-16.8%	-11.5%	1.7%	21.8%
Last Year Daily Average	34,790	34,879	36,404	37,315	37,195	32,525	27,047
YoY% Change	-85.3%	-82.7%	-83.9%	-89.0%	-89.0%	-87.9%	-89.4%



Weekday Average

Morning	1,179
Lunch	4,532
Afternoon	5,762
Early Evening	4,418
Evening	1,774

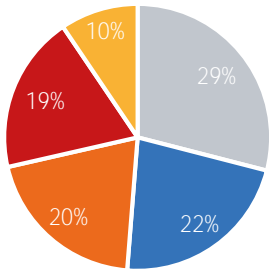
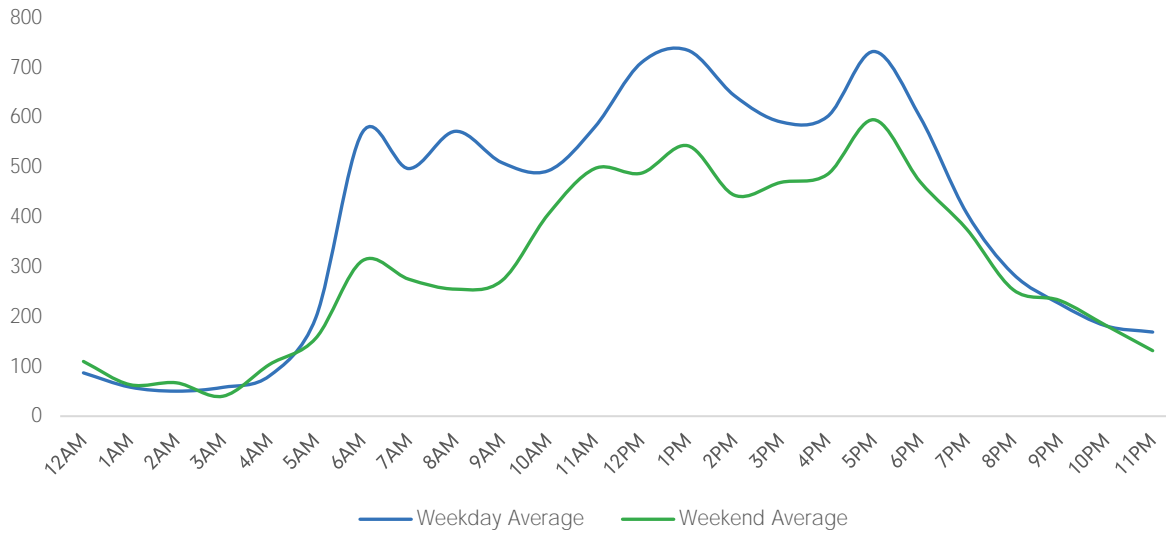


Weekend Average

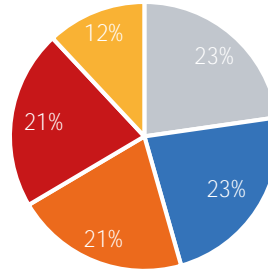
Morning	329
Lunch	776
Afternoon	1,195
Early Evening	743
Evening	318

Lexington Ave at 51st St

	Monday	Tuesday	Wednesday	Thursday	Friday	Saturday	Sunday
December Daily Average	9,734	10,512	10,018	9,662	8,240	7,997	6,455
November Daily Average	12,492	11,069	8,034	10,644	10,939	8,346	6,107
MoM% Change	-22.1%	-5.0%	24.7%	-9.2%	-24.7%	-4.2%	5.7%
Last Year Daily Average	34,790	34,879	36,404	37,315	37,195	32,525	27,047
YoY% Change	-72.0%	-69.9%	-72.5%	-74.1%	-77.8%	-75.4%	-76.1%

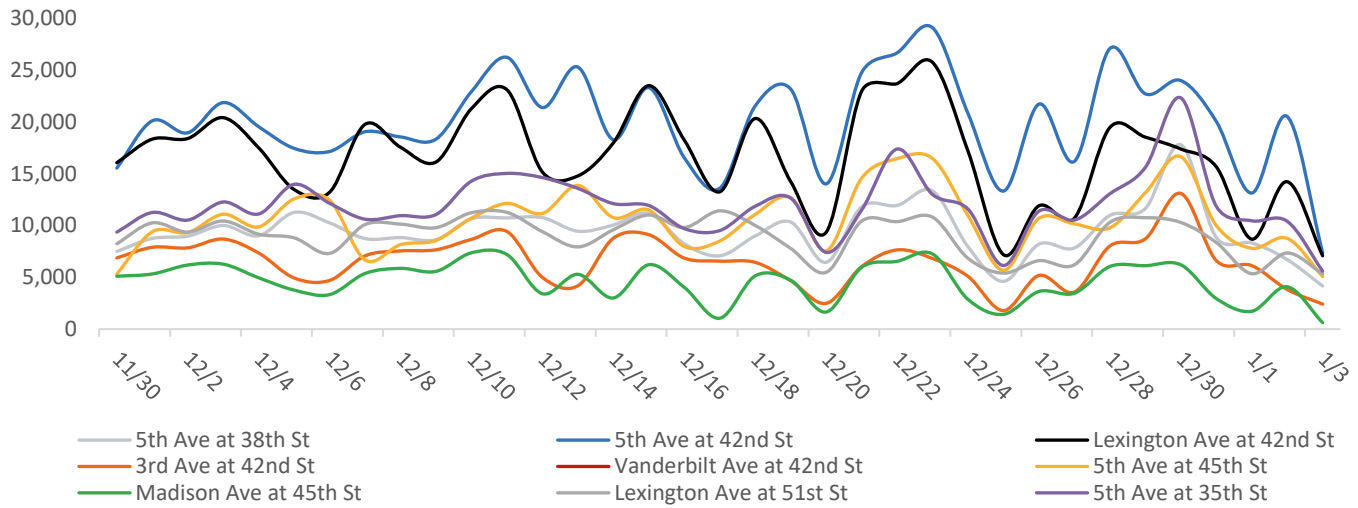


Weekday Average	
Morning	2,640
Lunch	2,025
Afternoon	1,836
Early Evening	1,739
Evening	861



Weekend Average	
Morning	1,520
Lunch	1,528
Afternoon	1,398
Early Evening	1,441
Evening	800

Pedestrian Counts by Location Group by Date



Pedestrian Counts by Location Group by Date

	5th Ave at 38th St	5th Ave at 42nd St	Lexington Ave at 42nd St	3rd Ave at 42nd St	Vanderbilt Ave at 42nd St	5th Ave at 45th St	Madison Ave at 45th St	Lexington Ave at 51st St	5th Ave at 35th St
11/30/2020	7,495	15,549	16,067	6,874	8,233	5,311	5,105	8,238	9,361
12/01/2020	8,756	20,120	18,348	7,903	9,742	9,401	5,325	10,260	11,265
12/02/2020	8,977	18,959	18,406	7,849	9,202	9,327	6,187	9,367	10,529
12/03/2020	10,006	21,877	20,422	8,697	10,180	11,096	6,272	10,441	12,280
12/04/2020	9,014	19,548	17,509	7,349	10,315	9,872	4,953	9,165	11,119
12/05/2020	11,271	17,455	13,480	4,937	15,264	12,576	3,768	8,815	13,983
12/06/2020	10,258	17,155	13,219	4,701	13,263	12,446	3,331	7,309	12,147
12/07/2020	8,743	19,064	19,779	7,080	8,878	6,677	5,373	10,102	10,612
12/08/2020	8,842	18,559	17,561	7,550	7,900	8,162	5,866	10,138	10,957
12/09/2020	8,638	18,347	16,140	7,660	9,306	8,565	5,575	9,796	11,068
12/10/2020	10,653	22,946	21,301	8,667	11,360	10,718	7,373	11,242	14,297
12/11/2020	10,733	26,251	23,114	9,427	13,089	12,138	7,202	11,270	15,038
12/12/2020	10,769	21,396	15,166	4,994	14,672	11,171	3,415	9,412	14,634
12/13/2020	9,454	25,311	14,793	4,184	15,478	13,874	5,292	7,938	13,588
12/14/2020	10,052	18,296	17,987	8,778	10,464	10,768	3,008	9,595	12,119
12/15/2020	11,183	23,319	23,512	9,120	10,959	11,506	6,223	11,021	11,937
12/16/2020	8,235	16,548	18,256	6,857	7,859	7,976	4,031	9,815	9,703
12/17/2020	7,079	13,602	13,261	6,566	8,235	8,506	1,051	11,425	9,519
12/18/2020	8,993	21,556	20,340	6,446	11,675	11,075	5,142	10,008	11,862
12/19/2020	10,344	23,190	14,255	4,676	15,414	12,689	4,720	7,797	12,657
12/20/2020	6,450	14,028	9,352	2,486	8,592	7,554	1,649	5,482	7,410
12/21/2020	11,807	24,770	22,966	6,030	10,884	14,574	5,965	10,427	11,497
12/22/2020	11,941	26,677	23,710	7,648	15,336	16,456	6,547	10,377	17,388
12/23/2020	13,345	29,107	25,761	6,816	12,603	16,476	7,257	10,811	13,001
12/24/2020	7,953	20,823	17,189	5,092	10,122	10,962	2,871	6,836	11,587
12/25/2020	4,611	13,332	7,193	1,787	5,309	5,688	1,428	5,405	6,141
12/26/2020	8,205	21,729	11,908	5,181	8,232	10,694	3,636	6,610	11,391
12/27/2020	7,836	16,201	10,718	3,584	10,700	10,163	3,466	6,209	10,534
12/28/2020	10,987	27,098	19,472	8,023	13,355	9,784	6,045	10,309	13,069
12/29/2020	11,649	22,723	18,539	8,718	18,447	13,166	6,124	10,763	15,614
12/30/2020	17,802	24,009	17,395	13,109	19,968	16,658	6,211	10,300	22,336
12/31/2020	8,851	20,064	15,678	6,623	13,914	10,007	2,953	8,365	11,864
01/01/2021	8,326	13,142	8,689	6,134	9,332	7,806	1,724	5,352	10,463
01/02/2021	6,712	20,535	14,235	3,822	14,569	8,768	4,088	7,353	10,413
01/03/2021	4,157	7,372	7,084	2,412	6,154	5,078	614	5,339	5,596